

## PowerSeries Neo Output & Hardwire Zone Expansion Modules

# HSM2108, HSM2204, HSM2208

### Features That Make a Difference:

- Hardwired zone expansions allows for easy expansion of zones and programmable outputs.
- Fully supervised expansion ensures constant communication with PowerSeries Neo control panel.
- Tamper supervision available, ensuring product is always secure.
- Connects to control panel via 4-wire Combus .
- Simple wiring can be home run, daisy chained or tee-tapped anywhere on the Combus .
- Fully encrypted communications back to PowerSeries Neo.



HSM2108  
8-Hardwired Zone  
Expander Modul

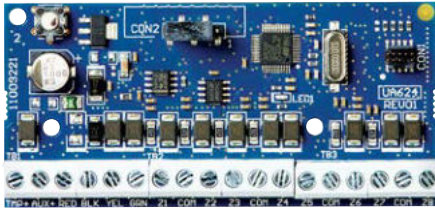


HSM2204  
High Current  
Output Modul



HSM2208  
Low Current  
Output Modul

## HSM2108 8-Hardwired Zone Expander Module



- The HSM2108 is zone input module that adds
- Up to eight fully programmable zone to any Visonic PowerSeries Neo security system.
- Supports no end-of-line, single end-of-line and double end-of-line zone loops. (5,600 Ohm resistors)
- Connect up to 15 modules per system.
- Tamper contact input.

### Specifications:

#### Ordering Information:

HSM2108VIS..... 8 Hardwired Zone Expander  
 Dimensions:.....45mm x 92mm (1.12/16" x 3 5/8")  
 Board Current Draw: ..... 130 mA (Max)  
 Voltage: ..... 12 VDC Nominal  
 Operating Environment: ... -10°C to 55°C (14°F to 131°F)  
 Relative Humidity: ..... 5 to 93%

#### Compatibility:

The HSM2108VIS is compatible with all Visonic PowerSeries Neo control panels.

#### Enclosures:

Model PC5003C (removable door) made of 22Ga steel, painted. Dimensions: 248mm(L) x 298mm(W) x 76mm(H), Weight: 1500g.

Model PC5003C (hinged door) made of 1.2mm thick steel, painted. Dimensions: 248mm(L) x 298mm(W) x 76mm(H), Weight: 2500g

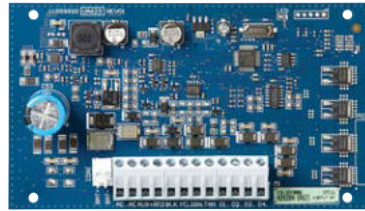
Model Power UC1 made of 18Ga steel, painted. Dimensions: 315mm(L) x 319mm(W) x 100mm (H), Weight: 3150g.

Model PC4003C made of 18Ga steel, painted. Dimensions: 230mm(L) x 180mm(W) x 75mm(D),

Weight: 1050g

NOTE: Use PC4003C or PC5003C for UL/ULC installations.

## HSM2204 High Current Output Module



- The HSM2204 is a dual-purpose module that provides
- programmable outputs for controlling external devices, and provides an additional +12 V 1.0 A of additional power.
- Connect up to 4 modules per system.
- Fully supervised for AC failure, low battery and AUX failure.

### Specifications:

#### Ordering Information:

HSM2204 VIS..... High Current PGM Expander  
 Dimensions:..... 145mm x 83mm (5 45/64" x 3 17/64")  
 Board Current Draw:.....40 mA (Max)  
 Voltage: ..... 12 VDC Nominal  
 Aux Output: ..... 1 A Max  
 Transformer Secondary Ratings:..... 16.5Vac, 40VA  
 Battery Capacity: ..... 4Ah, 7Ah, or 14Ah (2 x 7Ah) max.  
 Operating Environment: ... -10°C to 55°C (14°F to 131°F)  
 Relative Humidity: ..... 5 to 93%

#### Compatibility:

The HSM2204VIS is compatible with all Visonic PowerSeries Neo control panels.

#### Enclosures:

Model PC500C made of 22Ga steel, painted. 213mm(L) x 235mm(W) x 78 mm(H)

Model CMC- 1 made of 18Ga steel, painted. 287mm(L) x 298mm(W) x 80mm(H)

Model PC4050CAR made of 18Ga steel, painted. 376mm(L) x 305mm(W) x 125mm(H)

Model PC4050CR made of 18Ga steel, painted. 376mm(L) x 305mm(W) x 128mm(H)

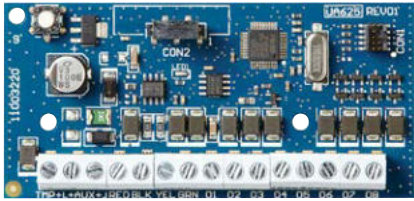
Model Power UC1 made of 18Ga steel, painted. 356mm(L) x 319mm(W) x 115mm(H)

Weight: 6.15Kg (PCB, Battery, XFRM)

Model PC5003C made of 22Ga steel, painted. 288mm(L) x 298mm(W) x 78mm(H),

Weight: 4.5Kg (PCB, Battery, XFRM)

## HSM2208 Low Current Output Module



- The HSM2208 provides programmable low voltage.
- Outputs.
- Connects up to 16 modules per system.

### Specifications:

#### Ordering Information:

HSM2208VIS.....Low Current PGM eExpander  
 Dimensions..... 45mm x 92mm (1.12/16" x 3 5/8")  
 Board Current Draw: ..... 60 mA (Max)  
 Voltage: ..... 12 VDC Nominal  
 Operating Environment: ..... -10°C to 55°C (14°F to 131°F)  
 Relative Humidity: ..... 5 to 93%

#### Compatibility:

The HSM2208VIS is compatible with all Visonic PowerSeries Neo control panels

#### Enclosures:

- Model PC5003C (removable door)
- Model PC5003C (hinged door)
- Model Power UC1
- Model PC4003C
- Model CMC-1
- Model PC4050CAR (commercial burglary)
- Model PC4050CR (ULC--S559)

NOTE: Use PC4003C, PC5003C, CMC-1, PC4050CAR, or PC4050CR for UL/ULC installations.

	HS2128	HS2064	HS2016
MAX HSM2108VIS	15	7	1
MAX HSM2204VIS	4	3	1
MAX HSM2208VIS	16	8	2